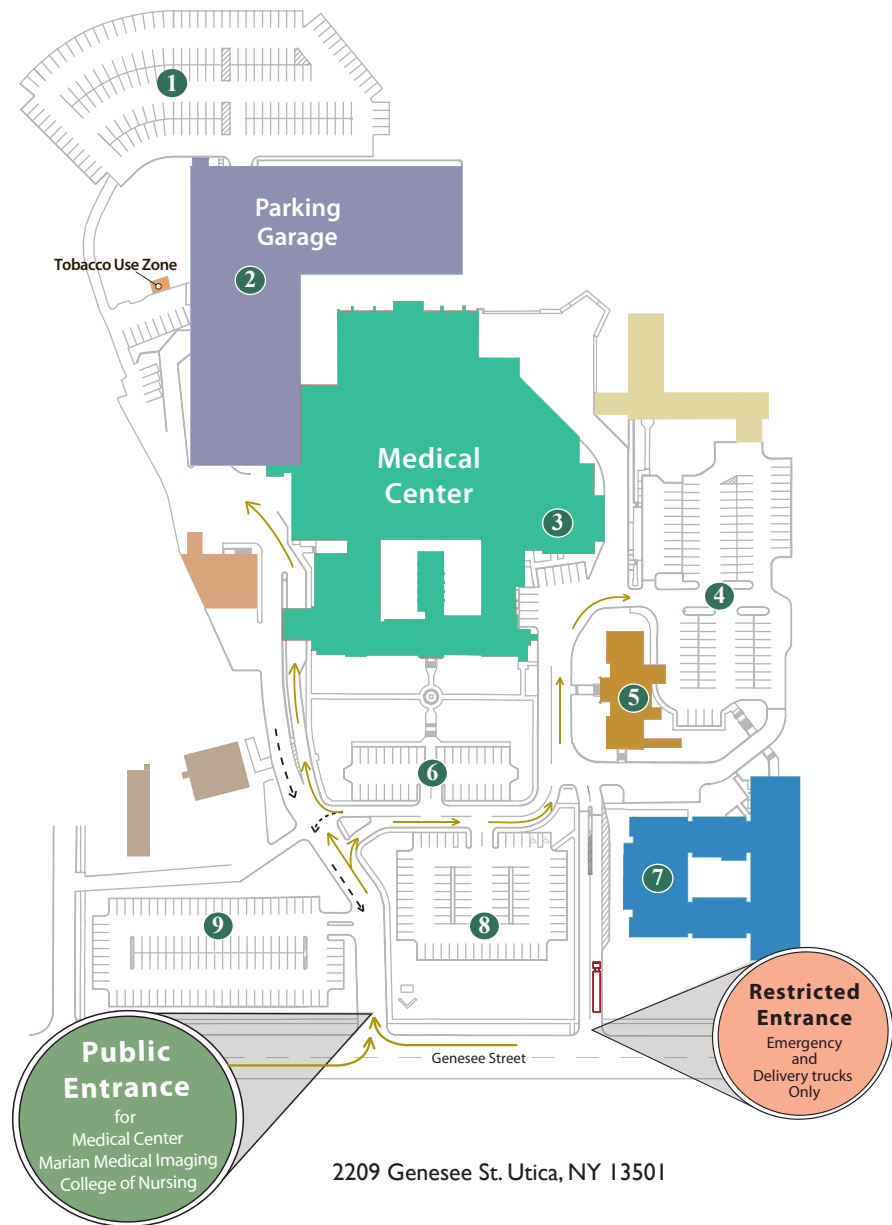


Campus Map

1 Visitor/Employee Parking	6 Parking Lot A (Physician/Employee Parking)
2 Visitor Parking	7 College of Nursing Building
3 Emergency Room Walk In Entrance	8 Parking Lot B (Employee Parking)
4 Marian Medical Professional Bldg. Parking Lot	9 Parking Lot C (Employee Parking)
5 Marian Medical Professional Bldg.	



Chapel Hours

Open 6 a.m. - 9 p.m. daily
 Mass Schedule 6 a.m. Mon. - Fri.
 7 a.m. Sat.
 7:10 a.m. Sun.



Visiting Hours

General Medical and Surgical Areas
 *2 p.m. - 8 p.m.
 *Visiting hours may vary on each unit. Please check with a nurse for further guidelines.



Cafeteria

Open 6:30 a.m. - 6:30 p.m. daily
 ATM and vending selections available at all times



Gift Shop

9 a.m. - 8 p.m. Mon. - Fri.
 1 p.m. - 4 p.m. Sat. - Sun.



Tobacco-Free Policy

All St. Elizabeth Medical Center facilities have been tobacco free since 2006. On campus, a tobacco use only zone has been designated to the north of the parking garage.

Phone Numbers

Main Number 315-798-8100
 Admission/ Registration 315-798-8133
 Billing Information 315-798-8173
 Home Care 315-797-9770
 Medical Group 315-734-4401
 Patient Advocate 315-798-8377
 Social Services 315-798-8135

St. Elizabeth Medical Center, occupies a 25-acre campus with 201 acute care beds and manages 13 Community Primary Care Centers throughout Oneida and Herkimer counties, including St. Elizabeth Medical Arts in New Hartford.

Inpatient and outpatient services include:

- Advanced Wound Care Management
- Ambulatory Surgery
- Laboratory Services
- Mammography
- Mohawk Valley Heart Institute
- Mohawk Valley Sleep Disorders Center
- Orthopedic Services
- Outpatient Radiology
- Outpatient Rehabilitation
- St. Elizabeth Health Support Services
- St. Elizabeth Home Care

St. Elizabeth Medical Center is recognized as a Regional Teaching Institution:

- St. Elizabeth College of Nursing
- School of Radiography
- St. Elizabeth Family Medicine Residency Program
- Fellowship in Gynecologic Endoscopy



St. Elizabeth Medical Center Visitors Guide

*Guided by Faith
Committed to
Excellence*

Mission

St. Elizabeth Medical Center Community, inspired by St. Francis of Assisi and faithful to the teachings of the Roman Catholic Church, is committed to excellence in healthcare and education. We pledge to do this with compassion and respect for the dignity of all.

Sponsored by the Sisters of St. Francis of the Neumann Communities.

Department/ Service

Level Elevator (closest to destination)

Acute Cardiac Care Unit (ACCU)2.....4,5
 Admitting1
 Administration1
 Ambulatory Surgery Unit (ASU).....4.....4,5
 Cafeteria1
 Cardiac Testing (CT).....2.....4,5
 Cardiac Waiting Rm4.....4,5
 Cardiac Catheterization Lab (CATH LAB)2.....8,9
 Cashier1
 Chapel.....1
 Conference Rooms A,B,C,D1
 Cardiothoracic Intensive Care (CTICU).....4.....8,9

Cardiothoracic Operating Room (CTOR).....4.....1,2
 Emergency Department (ED).....1
 Endoscopy/ GI3.....4,5
 Gift Shop1
 Intensive Care Unit (ICU).....3.....4,5
 Laboratory.....1
 Medical Library1
 Medical Records.....1
 MRI (CMI).....1
 Neurologic Surgery3.....8,9
 Nursing Administration.....1
 Oncology3.....1,2

Operating Room/ Recovery (OR)4.....4,5
 Orthopedic Unit.....2.....1,2
 Pediatrics.....3.....8,9
 Pre-Admission Testing (PAT)2.....6,7
 Post Anesthesia Care Unit (PACU)4.....4,5
 Post Cardiac Unit (PCU)4.....4,5
 Psychiatry2.....8,9
 Pulmonary Function Testing (PFT)3.....6,7
 Radiology1
 Rehabilitation Services/ OT/ PT/ Speech.....2.....4,5
 Special Care Unit (SCU)4.....4,5
 Waiting Rm. Radiology1

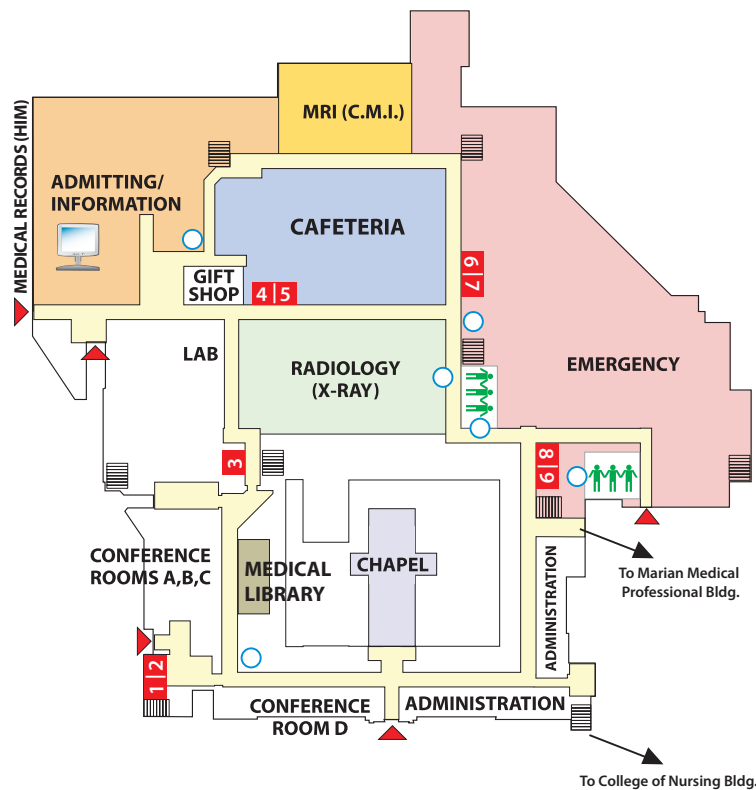
Waiting Rm. Cath Lab2.....8,9
 Waiting Rm. Cardiac4.....8,9
 Waiting Rm. Endoscopy/ ICU3.....4,5
 Waiting Rm. OR4.....4,5

Unit/ Room Breakdown

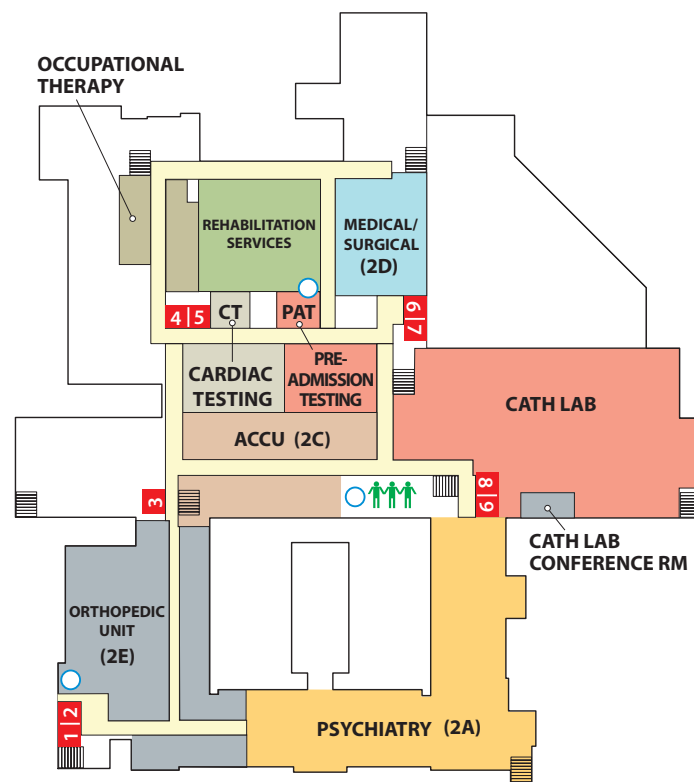
Unit/ Room	Specialty	Room Number
2A	Psychiatry Unit	203-217
2D	Observation/ Medical/ Surgical	219-230
2C	Acute Cardiac Care Unit	251-260
2E	Orthopedic Unit	261-272
3A	Medical/ Surgical	301-312
3B	Oncology/ Medical/ Surgical	321-337
	Neurology/ Pediatrics Units	350-373
3C	Medical/ Surgical	374-394
CTICU	Cardiothoracic Intensive Care Unit	401-409
4A	Progressive Care Unit	410-413 418-419
4C	Special Care Unit	414-417 420-435
ICU	Intensive Care Unit	3001-3016

Key: Elevator Entrance Registration Restroom Stairs Waiting Room

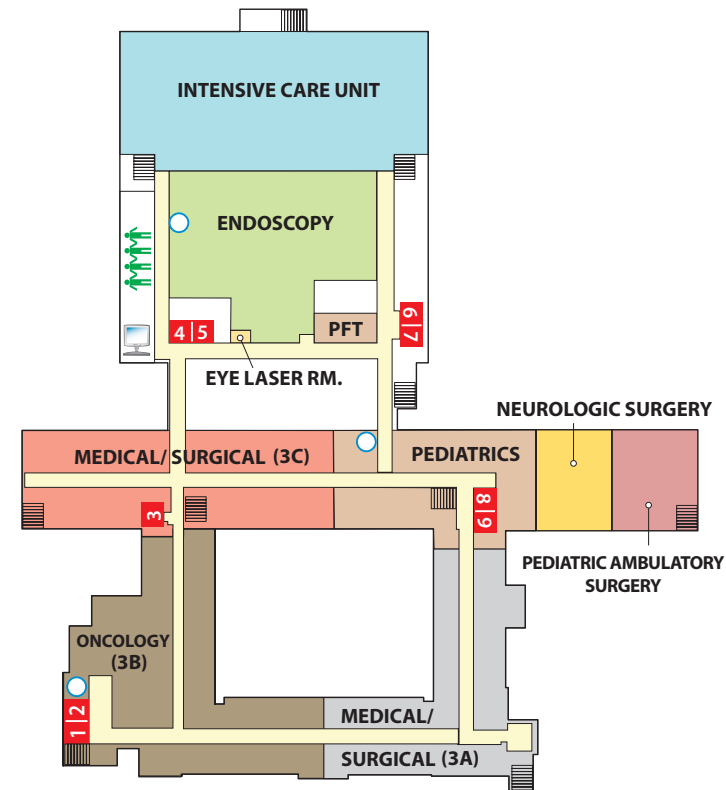
First Level



Second Level



Third Level



Fourth Level

